

Technical specification	Description
Electrical Requirements	220VAC/110VAC, 50 or 60Hz, 800VA
Operation Interface	Available in English, French, Spanish, German and Chinese
Console	12" Color Touch Screen
Flow Rate	0.1~50 ml/sec. in increments of 0.1 ml/sec, 01~10ml/sec for CT mode
Syringe Capacity	150ml for DSA mode and 200ml for CT mode
Volume	0.1 ml to max. syringe capacity
Rise Time	0.1~1.0 sec., in 0.1 ml increments
Preset Limit	Settable from 300~1200 psi (2070~8280kPa) in 1 psi increments, 0~300 psi for CT mode
Pressure Display	Display real-time pressure curve
Pressure Threshold	Automatically stop injection when pressure over the threshold
Pressure warning	Alarm and stop injection when over preset pressure limit
Injection or Scan Delay	0 to 3599 seconds in 1 sec. increments
Autofill	Settable flow rate from 3 – 8ml/sec., volume from 10ml to syringe capability
Multi-Phase	1~8 phases per injection
Pause	0~999 sec. in 1 sec. increments
Hold Capability	More than 30 minutes
Storage Capabilities	1000 protocols
Expel air locked	Unable to inject unless expelling air
I/O Interface	for GE, Siemens, Phillip, Toshiba, Shimadzu, Lepu, Wandong and Hitachi etc. medical imaging equipment
Heat maintainer	35~38 C(optional)
Emergency stop function	Clicking anywhere on the touch screen of the console or pressing any button on the injector arm to stop protocol injection
Dimension	Injector Arm and Pedestal: L: 27.6" (70.0cm), W: 21.3" (54.0cm), H: 50.2" (127.5 cm) Console: L: 4.55" (11.55cm), W: 12.68" (31.8cm), H: 9.77" (24.81cm) Main controller: L: 16.2" (41.2cm) W: 7.4" (9.1cm) H: 10.0" (25.3cm)
Weight	Injector Arm and Pedestal: 14Kg Console: 4.1Kg Main Controller: 7.2Kg



300X

Contrast Medium Injection System for Angiographic + CT Imaging



ESSE3 s.r.l., Via Garibaldi 30
14022 Castelnuovo D.B. (AT)
Tel +39 011 99 27 506
Fax +39 011 99 27 506
e-mail esse3@chiermet.it
web: www.esse3.dreamgest.com



The company is entitled to change the size and shape without any notice following the national regulations on the medical devices.

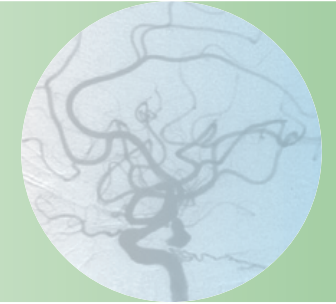


P/N:H15/D10-BR02(06)001 REV. C/1, 2019.8

300X

Contrast Medium Injection System for Angiographic + CT Imaging

The 300X contrast media injector is specially designed for the purpose of delivery contrast medium into humans for angiographic diagnostic studies



User-Friendly Operations

- Programming complex protocols easily on 12" wide touch screen of console
- Performing all operations conveniently either on the console or on the injector arm
- Available to synchronization with GE, SIEMENS, PHILIPS, TOSHIBA, SHIMADZU and HATACHI etc. brands machines.

Reliability & Safety

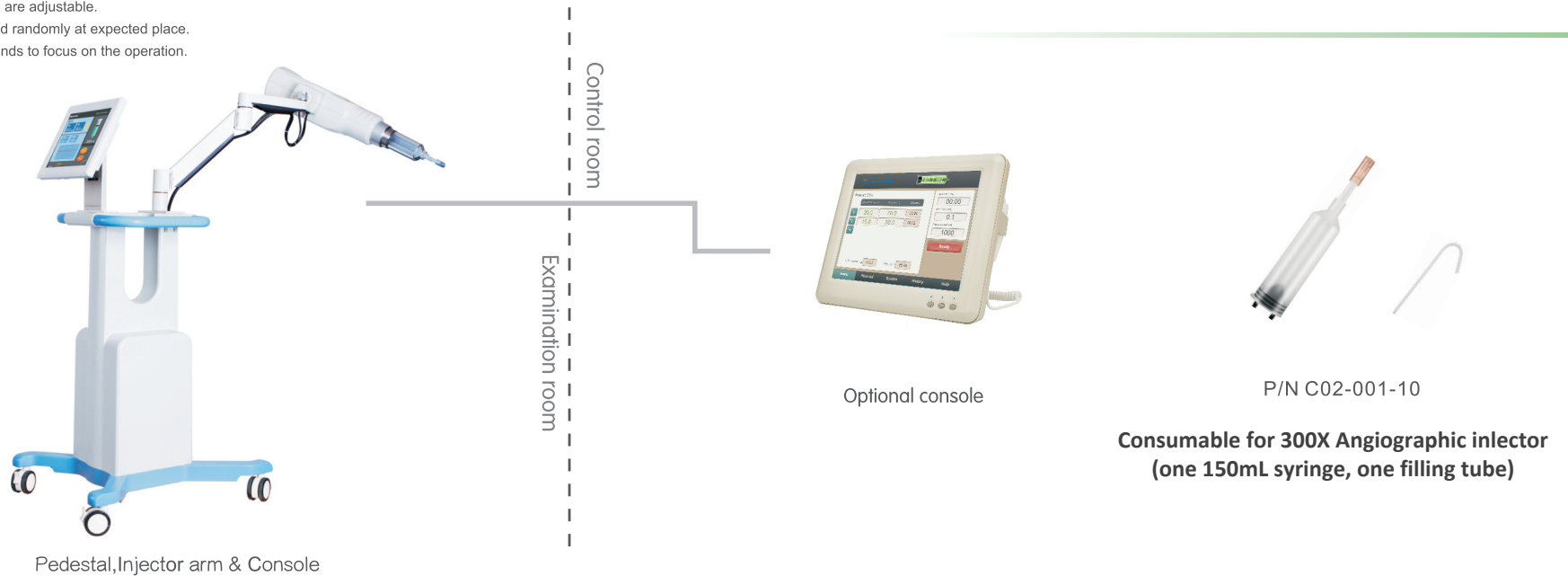
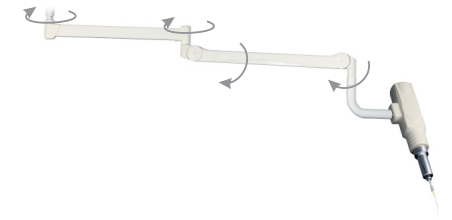
- High precision of flow rate and volume of injection
- Comprehensive real-time monitoring the pressure and system operating states
- Remote control of injection to reduce the radiations harmful to the operators
- Air expelling lock and warning before injections to reduce risk of air embolism

Scientific & Humanized Design

- The injector arm's height and direction are adjustable.
- The pedestal can be moved and locked randomly at expected place.
- The accessory tray frees the user's hands to focus on the operation.

Suspended Arm System (Optional)

- Saving space of scanning room
- More flexible operation
- Getting injector arm and the patient closer



Pedestal, Injector arm & Console

Optional console

P/N C02-001-10

Consumable for 300X Angiographic injector (one 150mL syringe, one filling tube)